



Bletchley Pathfinder

Information Pack
October 2023

Recap

What is this work trying to achieve?



To progress two of the Fuller recommendations

Provide more proactive, personalised care and support to people through a multi-disciplinary team approach

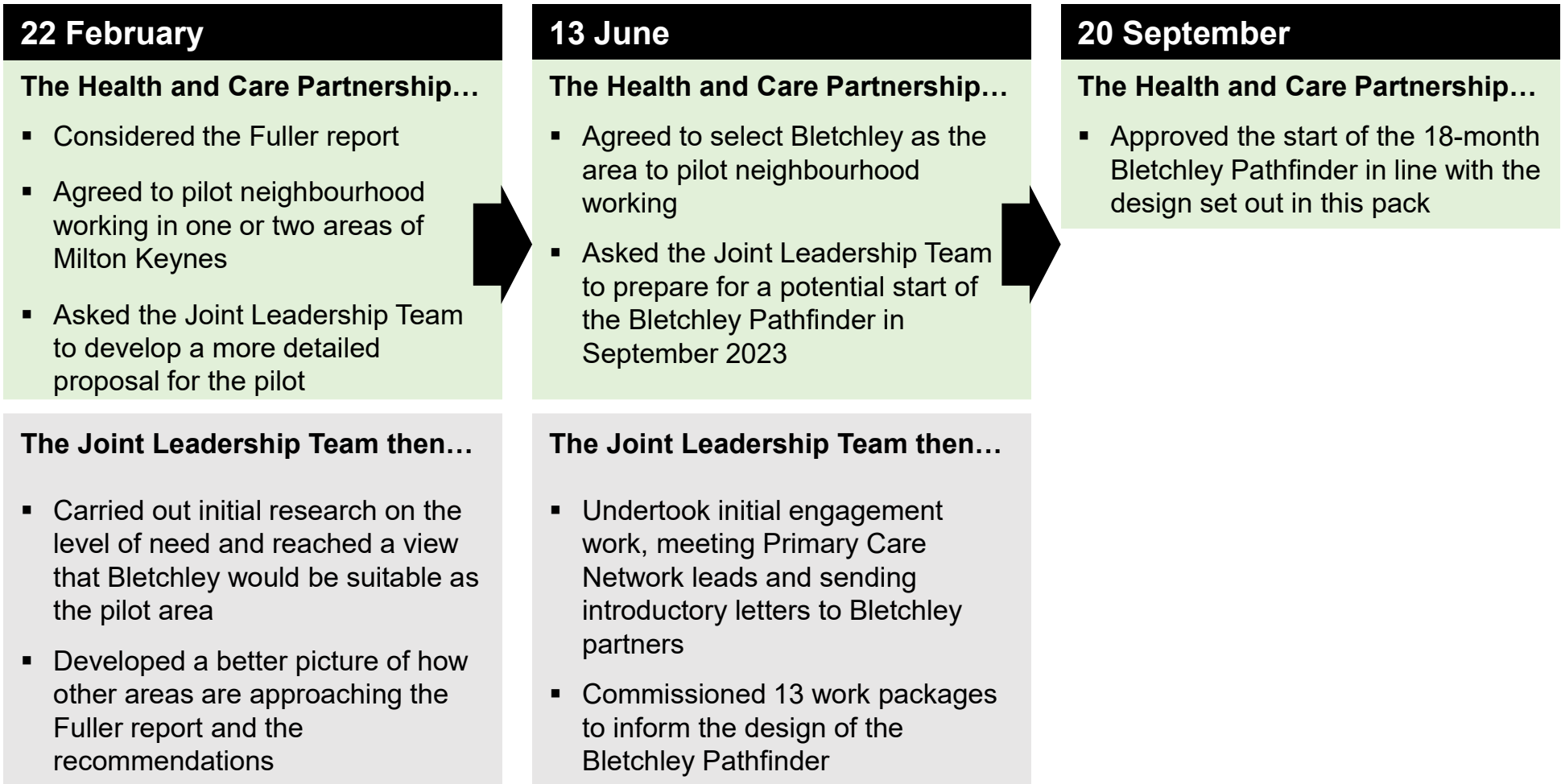
Help people to stay well for longer as part of a stronger focus on prevention of ill health

What is Fuller?

The Fuller stocktake report, Next Steps for Integrating Primary Care, is a national piece of work commissioned by the NHS which outlined a new vision for primary care that reorientates the health and care system to a local population health approach through building neighbourhood teams, streamlining access and helping people to stay healthy.

Recap

What have we done so far?



Designing the Bletchley Pathfinder

Informing our proposals



13 work packages have informed the design, including...



Carrying out a detailed local needs assessment



Gauging support from local NHS organisations



Talking with the local voluntary and community sector



Finding out the level of interest from schools



Looking at the role of community pharmacies



Getting feedback from the two Town Councils



Mapping the local public sector workforce



Background work on roles and ways of working



Asking local residents for their thoughts

Contact **Rebecca Green** to take a look at any of the work packages

Designing the Bletchley Pathfinder

The first three proposals



What we found out...

Very broad support for working more closely together from the NHS family, police, schools, the city council, town councils and the voluntary sector

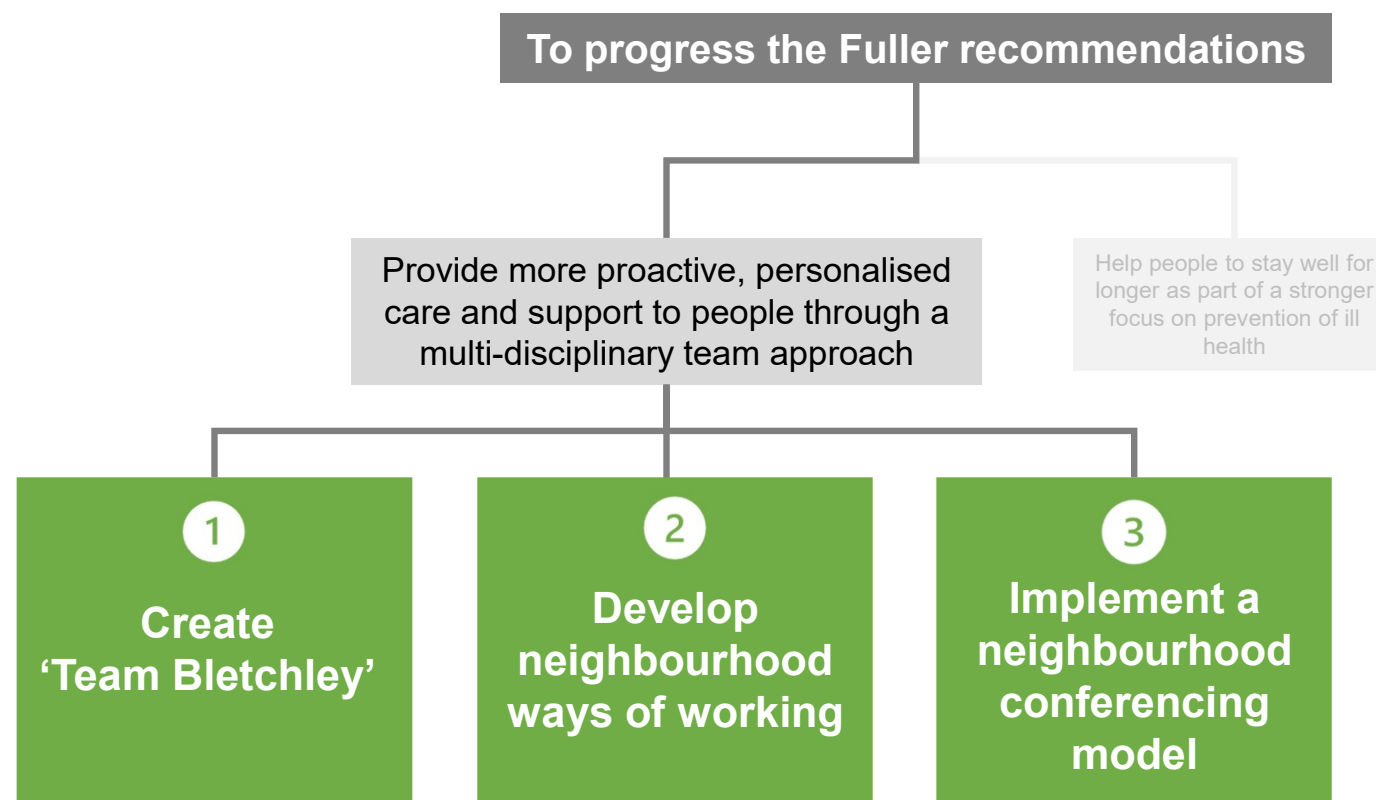
Lack of awareness of what different organisations do, how they operate and could interact better

There are some examples of multi-agency work taking place in the neighbourhood, but they are not consistent or could be developed further

Crime and the fear of crime a theme in resident feedback

Local people want to see better professional co-ordination

What we are proposing initially...



Designing the Bletchley Pathfinder

The proposals



1

Create
'Team Bletchley'

- Focused on building relationships and trust between professionals
 - Would create multiple opportunities for engagement and dialogue
 - Some universal events, some targeted – for example older adults
 - Products like an 'Induction to Bletchley' could be developed
 - Inclusive - open to public and voluntary sector organisations to join
-

2

Develop
neighbourhood
ways of working

- All about agreeing the best ways of working together in Bletchley
 - Could resemble detailed operational procedures or something looser
 - Focus on how different sectors interact (for example schools and health)
 - Will require a level of organisational sign up and commitment
 - Some form of monitoring and management probably inevitable
-

3

Implement a
neighbourhood
conferencing
model

- A way of addressing issues where multi-agency involvement is required
- Could be family-focused, or focused on a wider issue
- Standardised, well understood model
- Will need to be clear how it relates to other panel processes
- Will need active management and facilitation

Designing the Bletchley Pathfinder

The second three proposals



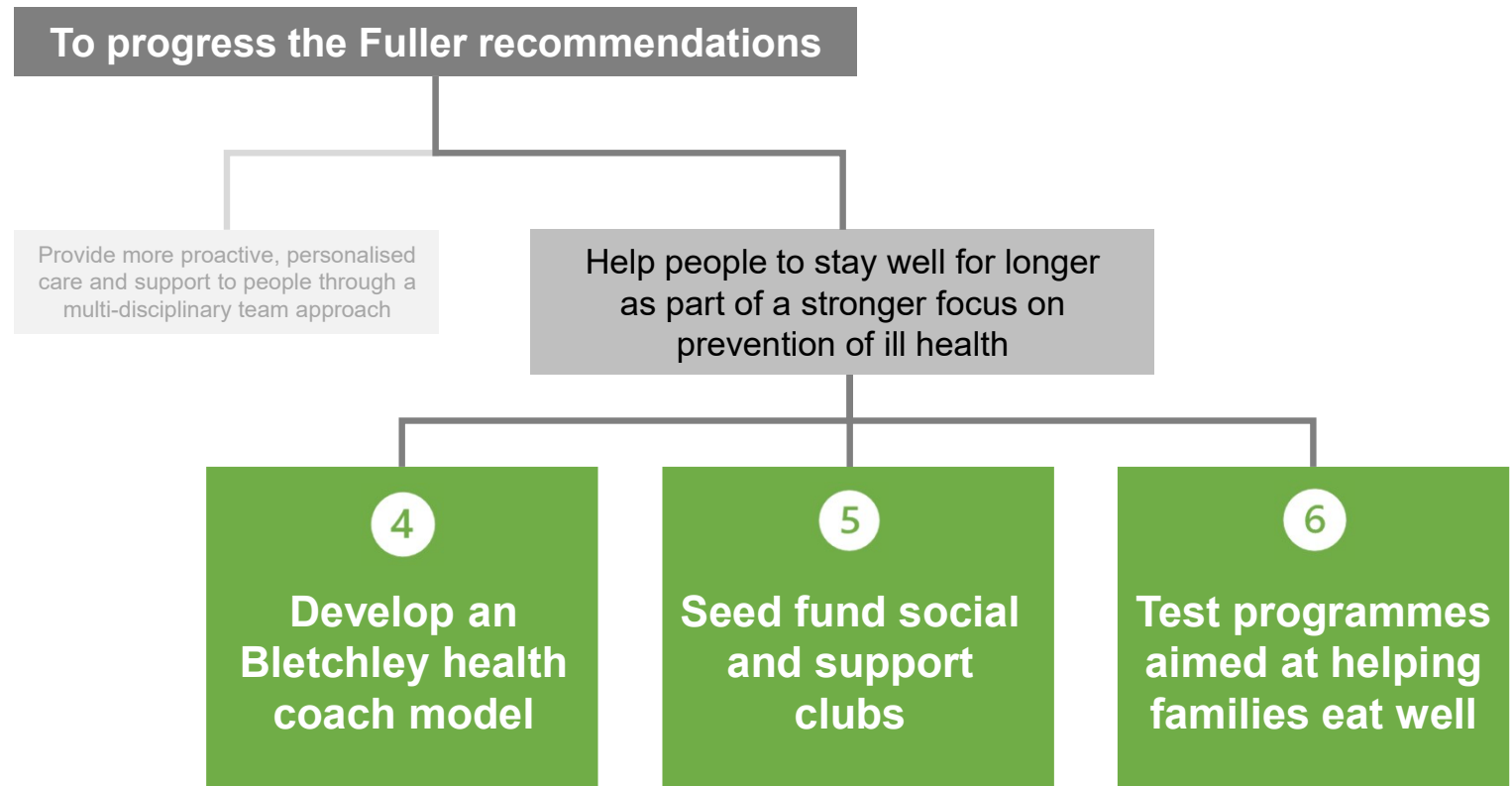
What we found out...

Health inequalities are worse across the board, but obesity and smoking rates stand out as much worse than elsewhere

Too much use of emergency health care and issues with out patients/planned care engagement. High number of residents have long term conditions so helping people have more control over their health and care is an important issue

Local people liked the idea of a health coach, but also want to see more support services

What we are proposing initially...



Designing the Bletchley Pathfinder

The proposals



4

Develop an
Bletchley health
coach model

- Based on health coaching model but with flexibility to innovate
 - Focused on people with existing conditions
 - Likely to be an 'add-on' to existing roles to achieve scale
 - Some existing roles may be suitable for conversion to health coach
 - Backed by training and support
-

5

Seed fund social
and support
groups

- Designed to fund both small social clubs and health support groups
 - Focus on lower cost clubs and groups and supporting new activities
 - Funding open to both residents and organisations
 - Simple application and reporting processes
 - Based on the successful 'Lakes Clubs' model
-

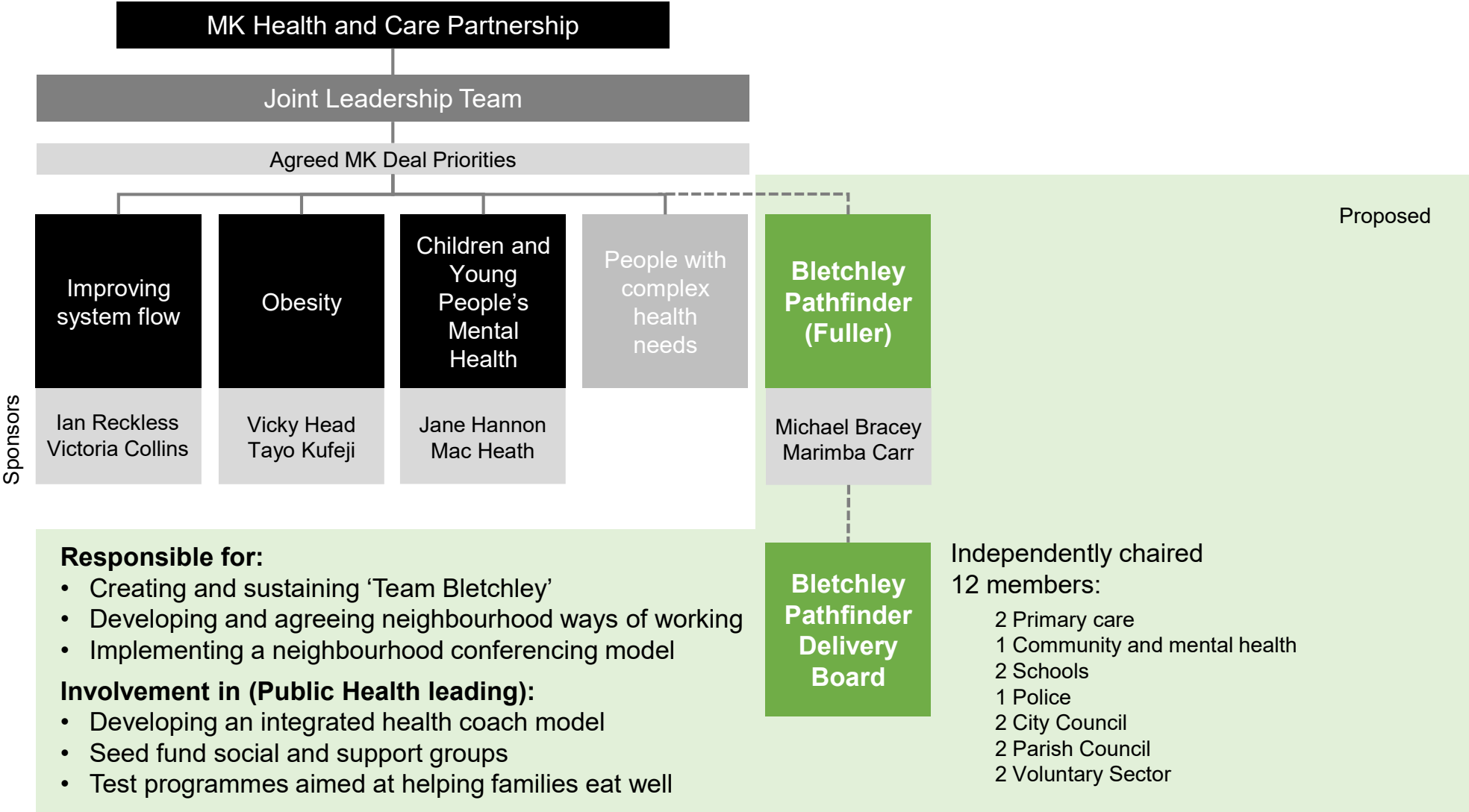
6

Test programmes
aimed at helping
families eat well

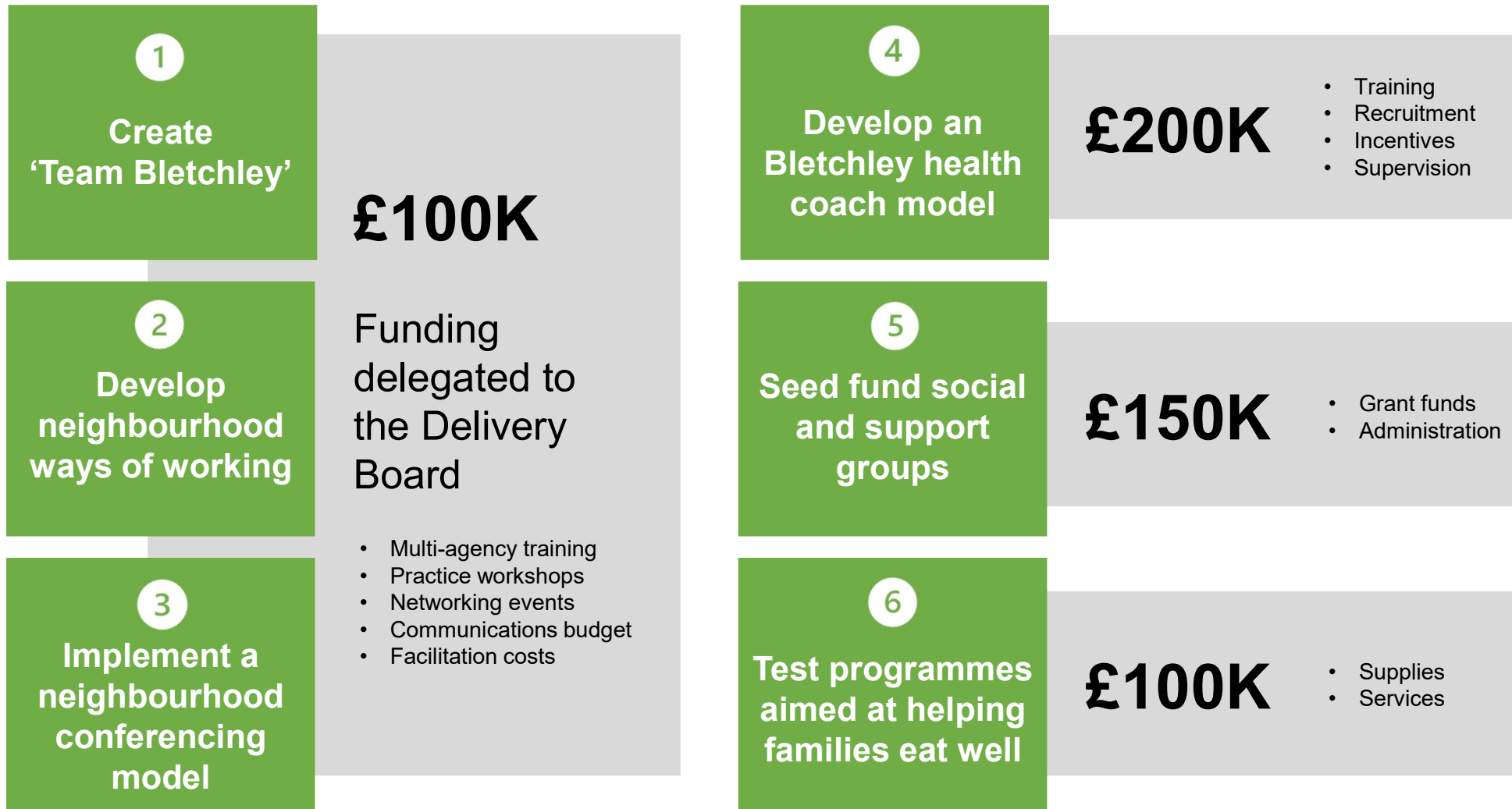
- Based on a 'test and learn' approach, co-produced with local people
- Targeted, focussing on families with young children
- Emphasis on improving food skills and access to healthier food
- Partnership approach including schools, children's centres, primary care
- Close working with partners such as and SOFEA and MK Food Bank



Designing the Bletchley Pathfinder Governance



Designing the Bletchley Pathfinder Governance – Indicative budget



Funding sources: £350K from the £500K 2023 Health Inequalities ICB funding and £200K from the £500K 2022 general ICB Place based co-ordination ('Population health management')

Designing the Bletchley Pathfinder

Evaluation proposals



1 Create 'Team Bletchley'	Sentiment tracking amongst professionals (regular engagement)
2 Develop neighbourhood ways of working	Adherence with agreed ways of working (exception reporting)
3 Implement a neighbourhood conferencing model	Attendance and participation in neighbourhood conferencing, tracking outcomes

4 Develop an Bletchley health coach model	Record keeping by coaches demonstrating change, some record sampling
5 Seed fund social and support groups	Numbers of groups and participants recorded. Qualitative report produced after twelve months.
6 Test programmes aimed at helping families eat well	Project level evaluation will report on impact of interventions and focus on learning